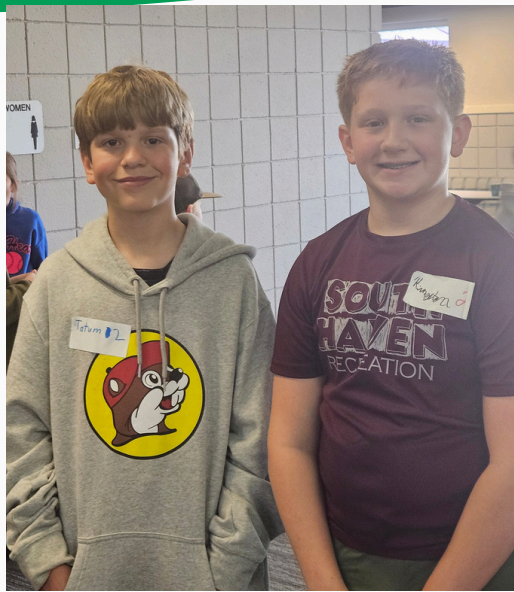


# 4-H UPDATES



Official Newsletter of Sumner County 4-H



## Way to Go Regional Club Day Participants!

Sumner County sent six 4-H members to Regional Club Days in Medicine Lodge. All Sumner County participants did a great job with several receiving top blues! Regional activities are a great way to show off your skills, make new friends, and gather new ideas for 4-H projects. So whether you can go to Regional Club Days, regional project meetings, or other events take advantage of these cool learning opportunities!

## This issue:

Program News & Updates

PAGE 2-3

Read 4-H

PAGE 4

Agent Notes

PAGE 5

Club News

PAGE 6

Looking Ahead

PAGE 7

Connect With Us

PAGE 8

# Program News & Updates



## Babysitting Clinic

On March 21<sup>st</sup> the Extension Office hosted their annual Babysitting Clinic. We had 11 participants from across Sumner County and enjoyed learning about babysitting safety, nutrition, CPR, and activities to do with children. We had a visit from Wellington EMS to teach us about CPR and recognizing when to call 911 in an emergency. All participants were engaged in the clinic and walked away with a certificate certifying that they received essential skills for babysitting this summer.

### AG EXPERIENCES THAT PAY

HOW TO MONETIZE YOUR SIDE HUSTLE

JOIN US FOR AN ENGAGING EVENING FOCUSED ON TURNING AGRICULTURAL IDEAS INTO INCOME. WHETHER YOU'RE JUST GETTING STARTED OR THINKING ABOUT GROWING WHAT YOU'VE BUILT, THIS EVENT HIGHLIGHTS REAL-WORLD EXAMPLES AND PRACTICAL INSIGHT FROM THOSE WHO HAVE MADE IT WORK.

**FEATURED SPEAKER**  
**DR. YUE TENG VAUGHAN**  
 KANSAS STATE UNIVERSITY PRESIDENTIAL ENGAGEMENT FELLOW

**TICKETS**  
 \$5 IN ADVANCE  
 \$10 AT THE DOOR

**ADVANCE TICKETS ARE ENCOURAGED.**  
 Ticket Locations: Cowley Extension- Winfield, Sumner Extension Wellington, Caldwell Workspace Caldwell- Flying Toad - Oxford, La Hacienda South - Ark City

THIS INSTITUTION IS COMMITTED TO PROVIDING EQUAL OPPORTUNITY FOR PARTICIPATION IN ALL PROGRAMS, SERVICES, AND ACTIVITIES. PROGRAM INFORMATION MAY BE AVAILABLE IN LANGUAGES OTHER THAN ENGLISH. LANGUAGE ACCESS REQUESTS AND REASONABLE ACCOMMODATIONS FOR PERSONS WITH DISABILITIES, INCLUDING ALTERNATIVE MEANS OF COMMUNICATION (E.G., BRAILLE, LARGE PRINT, AND AMERICAN SIGN LANGUAGE), MAY BE REQUESTED BY CONTACTING THE EVENT CONTACT, BECKY REID, FOUR WEEKS PRIOR TO THE START OF THE EVENT. 4/2/26 AT 620-221-5450 OR [BREID@KSU.EDU](mailto:breid@ksu.edu). REQUESTS RECEIVED AFTER THIS DATE WILL BE HONORED WHEN IT IS FEASIBLE TO DO SO. LANGUAGE ACCESS SERVICES, SUCH AS INTERPRETATION OR TRANSLATION OF VITAL INFORMATION, WILL BE PROVIDED FREE OF CHARGE TO LIMITED ENGLISH PROFICIENT INDIVIDUALS UPON REQUEST.

**THURSDAY 30 APRIL 6:00-7:30 PM**

**BROUGHT TO YOU BY**  
**KANSAS STATE UNIVERSITY**  
 Extension

**Raymond Frye Building**  
 320 N Jefferson Ave  
 Wellington KS

**Sumner County Farm Bureau** "The Voice of Agriculture"  
**COWLEY COLLEGE**

## Ag Experiences That Pay Event

On April 30<sup>th</sup> at 6:00pm the Extension Office will be hosting an ag tourism event. This event is aimed at people who have a side hustle or want to learn how to start one. The keynote speaker will be Dr. Vaughan from K-State who teaches hospitality management and her work focuses on sustainability, innovation, and agritourism. Tickets are available at the Sumner County Extension Office and other locations mentioned on the flyer for presale at \$5 a ticket or \$10 at the door.

# Program News & Updates



## Discovery Days

4-H Discovery Days is a mini college experience designed for youth 13-18 years old as of January 1<sup>st</sup>. Attendees stay in the dorms, eat in the dining hall, and take classes of their choosing on campus. This event is a great way to meet 4-Her's from across the state, get a taste of college life, and explore new and exciting project areas. The event will be in Manhattan from June 3<sup>rd</sup>-5<sup>th</sup> and cost \$245. That may seem high, but it is worth every penny. Don't forget that you can write to both the 4-H Council and Development Fund requesting scholarships to help cover registration costs! Registrations are due May 8<sup>th</sup> and all the information can be found by searching "Ks 4-H Discovery Days". If you have any questions please reach out to the Extension Office.

**KANSAS STATE UNIVERSITY** | Extension  
Cowley County  
Sumner County  
Sedgwick County



## TRACTOR SAFETY

To receive certification, students will be required to complete independent coursework and a driving test administered by their employer, along with the in-person class. The course will cover safe tractor and machine operation.



**Pre-Registration  
Required by  
Tuesday, May 26**

<https://bit.ly/TracSafe26>

### DETAILS

- Thursday, May 28, 2026
- Mulvane Middle School, 915 N Westview Dr. Mulvane, KS 67110
- 8:30 a.m. - Mid-afternoon
- Registration Fee- \$20- Includes educational materials and lunch
- Class is limited to 40 students

### CONTACT US

Sumner County 620.326.7477  
Sedgwick County 316.660.0153  
Cowley County 620.221.5450

## Tractor Safety

On Thursday May 28<sup>th</sup> Sumner, Cowley, and Sedgwick Counties will be hosting their annual Tractor Safety day. The class will be at Mulvane Middle School and run from 8:30am - midafternoon. There will be a \$20 fee for the class with lunch provided. Please RSVP through the link on the flyer by May 26<sup>th</sup>. If you have any questions please contact the Sumner County Extension Office.

K-State Research and Extension is committed to providing equal opportunity for participation in all programs, services and activities. Program information may be available in languages other than English. Language access requests and reasonable accommodations for persons with disabilities, including alternative means for communication (e.g., Braille, large print, audio tape, and American Sign Language), may be requested by contacting the event contact, Jeff Seiler four weeks prior to the start of the event (May 1, 2026 at 620-326-7477/316-660-053/620-221-5450 or [jsailer@ksu.edu](mailto:jsailer@ksu.edu)). Requests received after this date will be honored when it is feasible to do so. Language access services, such as interpretation or translation of vital information will be provided free of charge to limited English proficient individuals upon request.

Kansas State University Agricultural Experiment Station and Cooperative Extension Service  
K-State Research and Extension is an equal opportunity provider and employer.

# Read 4-H



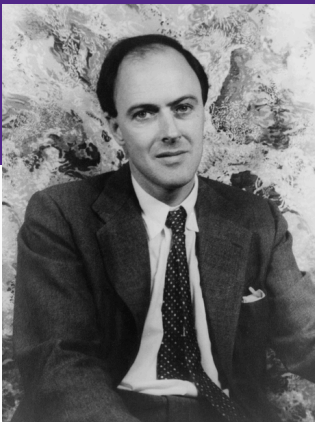
## Next Meeting:

May 5<sup>th</sup>, 2026  
6:30pm the Raymond  
Frye Complex

Meetings are open to all  
and it's never too late to  
join Read 4-H!

“Books shouldn’t be  
daunting: they should be  
funny, exciting, and  
wonderful.”

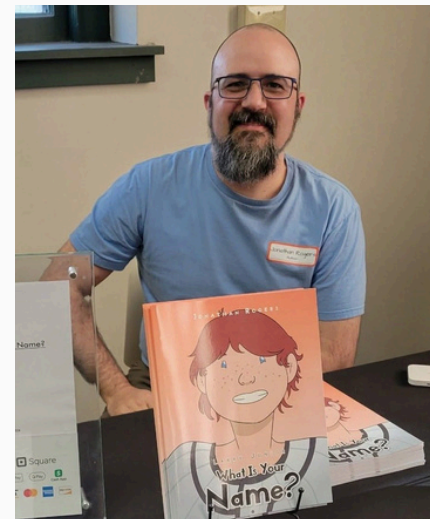
-Roald Dahl



## Read 4-H

Read 4-H met on March 10<sup>th</sup> at the Raymond Frye Complex. Shelly showed an example of what members in the project can do for the book, with a story she wrote about a lamb at her farm, with photos she took of him printed locally to illustrate it. She typed it on her computer, printed it, covered it with cardboard, and sewed it together. Members then shared how their projects are going.

After sharing about their projects, the group heard from local author Jonathan Rogers, who taught us about the process of creating a book for publication. The character in his book “What is Your Name?” came to him when he was in high school and years later, he worked with a publisher to bring Larry Junior to life. Johnathan talked about the creative writing process and some of the writing exercises he does. He also walked us through the steps it took to publish “What is Your Name?”, from sending his script to publishing companies, choosing an illustrator, and getting it printed and on the shelves of stores and libraries. He also gave a sneak peak of some of his other stories he hopes to publish and also what this booth looks like when he sells directly at vendor events.



# Agent Notes

DEAR DEVELOPMENT FUND,

I WOULD LIKE TO GO TO 4-H DISCOVERY DAYS. MY GOAL TO MEET NEW PEOPLE AND GET NEW PROJECT IDEAS. THE CAMP COSTS \$245 AND I WOULD LIKE SOME HELP COVERING THE COST.

THANK YOU,  
WILLIE WILDCAT

4-H

## 4-H Development Fund Opportunities

This topic is old to some, but many still do not know about the 4-H Development Fund and what it is. The 4-H Development Fund was established for the purpose of enhancing the 4-H Youth Program. The Fund enhances the 4-H program by offering scholarships to 4-Her's attending learning events, help cover the cost of training volunteers, and purchasing equipment that will help the program.

So how do 4-Her's get scholarships from the Development Fund? Well they need to first identify a 4-H related learning event they want to attend. This could be Discovery Days, the Washington Focus Trip, 4-H camp at Rock Springs, or any other 4-H event that has a cost associated to it. Once you the know the event you want to attend and the cost you can write a letter to the Development Fund explaining what event you want to attend, the cost, and why you want to go. Upon receiving your letter the Development Fund will review it and decide how much to scholarship to offer you.

Another way the Fund helps the 4-H Program is by paying for volunteers to get trained. The primary example of this is Shooting Sports Instructors. Our instructors have to go through expensive training to be certified to teach Shooting Sports. The Development Fund partners with the 4-H Council to help cover the cost of the training so we can have a great Shooting Sports program.

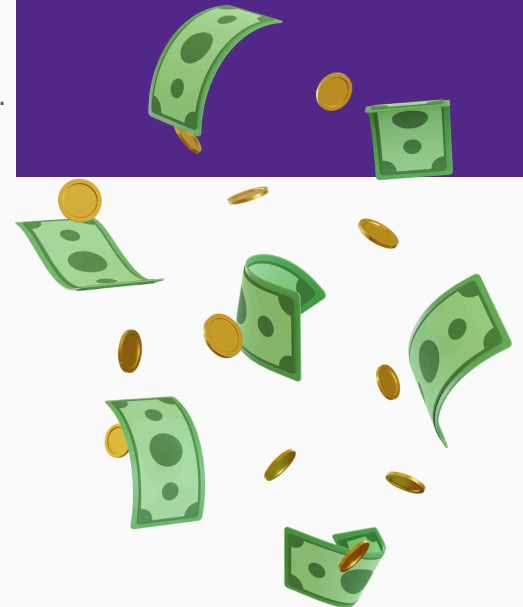
The last major way the Fund helps 4-H is buy helping to purchase expensive equipment. A recent example is the purchase of our small animal livestock scale and trailer to haul it. The Development Fund was saving money for several years to purchase scales to be used at the 4-H Fair and by 4-Her's throughout the year.

So now that you know a bit more about the Development Fund consider finding a new 4-H event to attend and consider writing a letter for a scholarship to help attend!

One of my favorite memories from my days in 4-H was attending Discovery Days in Manhattan. It was an expensive experience, but thankfully by writing into the Development Fund I received a scholarship to help cover part of the registration fee to be able to attend. No matter what event you want to go to, write a letter because you may be surprised how strongly the Development Fund wants to support you.

## Who Doesn't Want Money?

HERE'S HOW TO GET SOME! (SORTA)



## Side Notes

# Club News



## Reporter's Corner

Club News from  
Sumner County



## Trailblazers

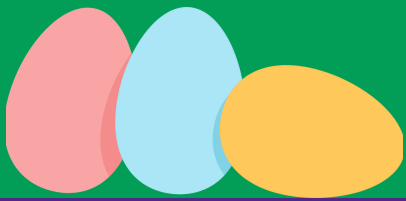
The Trailblazers 4-H Club has been working on having project talks and demonstrations at each meeting. We enjoy snacks and games afterwards as well.

Cardinals

Buccaneers

Redwings

Happy Hustlers



# 4-H Council Work Groups

APRIL 27TH  
@ 6:00 PM



## 4-H Tips

### KEYS TO A GOOD 4-H PROJECT

HERE ARE A FEW KEY THINGS TO REMEMBER WHEN PREPARING PROJECT FOR THE 4-H FAIR

- PICK A PROJECT YOU ARE EXCITED ABOUT
- PREPARE EARLY, LEAVE TIME FOR FIXES
- WORKING CONSISTANTLY IS BETTER THAN WAITING UNTIL THE LAST MINUTE
- DON'T BE AFRAID TO TRY NEW IDEAS OR PROJECTS
- IF YOU DON'T KNOW, ASK FOR HELP
- DOUBLE CHECK EVERYTHING BEFORE COMING TO THE FAIR
- BRING EXTRA SUPPLIES TO FIX PROJECTS IF THEY GET DAMAGED IN TRANSIT

KEEP THESE THINGS IN MIND AS YOUR PREPARE FOR THE 4-H FAIR THIS SUMMER!

## Looking Ahead

### April

- 1<sup>st</sup>; 4-H Senior Scholarships due
- 27<sup>th</sup>; 4-H Council Project Night

### May

- 1<sup>st</sup>: 4-H project add/drop date
- 1<sup>st</sup>; Beef ID due
- 25<sup>th</sup>; Office Closed for Memorial Day
- 26<sup>th</sup>; 4-H Council Project Night
- 28<sup>th</sup>; Tractor Safety @ Mulvane Middle School



# Beyond Ready

# KANSAS STATE UNIVERSITY

## Extension Sumner County

Connect with us on



### Kansas State University Agricultural Experiment Station and Cooperative Extension Service

Kansas State Research and Extension is an equal opportunity provider and employer.

#### Accommodations:

K-State Research and Extension is committed to providing equal opportunity for participation in all programs, services and activities. Program information may be available in languages other than English. Reasonable accommodations for persons with disabilities, including alternative means for communication (e.g., Braille, large print, audio tape, and American Sign Language) may be requested by contacting the event contact K-State Research & Extension - Sumner County two weeks prior to the start of the event at 620-326-7477 or [sucoext@gmail.com](mailto:sucoext@gmail.com). Requests received after this date will be honored when it is feasible to do so. Language access services, such as interpretation or translation of vital information will be provided free of charge to limited English proficient individuals upon request.

### Sumner County Office

320 N. Jefferson Ave  
Wellington, KS 67152

620-326-7477