

4-H UPDATES



Official Newsletter of Sumner County 4-H



Learn
by
Doing.

Opportunities Ahead: Get Involved

This is a great time to dive in and make the most of everything 4-H has to offer. With many activities, workshops, and events coming up, members are encouraged to get involved, try something new, and stay curious. Asking questions - whether about projects, events or new skills - is one of the best ways to learn and grow in 4-H. Every meeting and activity is an opportunity to build confidence, connect with others, and discover new interests, so jump in, speak up, and take advantage of the exciting opportunities ahead.

This issue:

Program News & Updates

PAGE 2 - 3

Read 4-H
PAGES 4 - 5

Agent Notes
PAGE 6

Club News
PAGE 7

Looking Ahead
PAGE 8

Connect With Us
PAGE 9

Program News & Updates



Kansas Junior Producer Days

For all 4-Her's enrolled or interested in the Beef and Sheep projects here are two great learning opportunities. Each year K-State puts on two Junior Producer Days. The species alternate years and this year they are offering beef and sheep. These are great learning opportunities for 4-Her's of all ages and experience levels. They are held in Manhattan in March and April respectively and cost \$20 per person to attend. Both events combine classroom type learning with hands on experience for each species. Topics covered have previously include nutrition, facilities, how to show market versus breeding animals, showmanship, breeding, and more. If you want to get more information or to sign up visit:

<https://www.asi.k-state.edu/extension/youth-programs/>

4-H Council Changes

As many of you saw either in the last 4-H Newsletter or via email, some changes have happened to the 4-H Council. I wanted to very briefly highlight them again, if you want more information please check your email.

Changes you will see:

- Altered voting rules
- Bi-monthly meetings
- Creation of County Work Groups
- Creation of county wide Project Nights

Again, this is a very brief idea of the changes that you will see this year with the 4-H Council. Please watch your email for ways that you can get involved in Work Groups, Council Meetings, and Project Nights.

2026 K-State Junior Sheep Producer Day

Date
4.11.2026
Manhattan, KS

Registration
Due: 3.20.2026
Cost: \$20/person
<https://bit.ly/SheepProducer>

*All adults & youth must register to attend.
**Only those registered by 3/20/26 will receive a t-shirt.
***Late registration is \$30/person.

Questions
Lexie Hayes
785.532.1264
adhayes@ksu.edu

Program

Join us for the biennial K-State Junior Sheep Producer Day on Saturday, April 11, 2026. Presentations will be provided by featured guests, as well as K-State faculty, staff, and students. This event will be an educational day of activities in which youth, parents, extension agents, ag teachers, and sheep project leaders can increase their knowledge of youth sheep project selection and management. A variety of topics will be shared, including an optional YQCA certification at the end of the day. All ages and skill levels are invited! Lunch and a t-shirt are included. The registration fee is \$20/person for those who sign up by March 20 or \$30/person for those who register after that date. Only those who register by the deadline will receive a t-shirt. This is a family event! Anyone attending, including both youth and adults, must register. There will be an optional tour of the sheep and meat-goat center offered on Friday evening and Saturday after fr. day.

Tentative Schedule

Friday, April 10
5:00-7:00PM Optional Tour of Sheep & Goat Center

Saturday, April 11
8:00AM Check-in
9:00AM Welcome
9:15AM Selection
10:00AM Nutrition
10:45AM Morning Breakout Sessions
-facilities & equipment, reproduction, project management purchase to show

NOON Lunch
1:00PM Health
1:45PM Afternoon Breakout Sessions
-wool, showmanship, clipping & grooming

3:45PM Dismissal
4:00PM Optional YQCA Class
4:00-6:00PM Optional Sheep & Goat Center Tour

K-State, County Extension Councils, Extension Districts, and U.S. Department of Agriculture Cooperating. All educational programs and materials available without discrimination on the basis of race, color, religion, national origin, sex, age, or disability.

2026 K-STATE JUNIOR BEEF PRODUCER DAY

March 7

Registration

Deadline: February 13
Fee: \$20/person
Registration Link: <https://bit.ly/BeefProducer>
Late Registration: \$30/person (after February 13)

*All attendees must register, including youth & adults
**Late registrants will not receive a t-shirt.

Tentative Schedule

8:00AM Check-in
9:00AM Welcome
9:15AM Project Selection
10:00AM Morning Breakout Sessions
-Nutrition, Meat Science, Daily Care, Grooming & Fitting
Lunch
1:00PM Afternoon Breakout Sessions
-Health, Reproduction, Showmanship

3:15PM Dismissal
3:30PM Optional YQCA Class

Registration Due February 13

Questions?
Lexie Hayes
785.532.1264 | adhayes@ksu.edu

K-State, County Extension Councils, Extension Districts, and U.S. Department of Agriculture Cooperating. All educational programs and materials available without discrimination on the basis of race, color, religion, national origin, sex, age, or disability.

Program News & Updates

SHEEP & GOAT BASICS



Instructed & Sponsored by
Frank & Sheila Beesley,
Tractor Supply, & Cassidy Chase

ANIMAL
SELECTION



Where:
Raymond Frye Complex, 320 N
Jefferson Ave, Wellington, KS 67152

When: February 7th, 2026 from
10:00am - Noon

Please RSVP by January
30th with the QR Code or
email the office at
sucoext@gmail.com



FEED &
WATER

JOIN US IN LEARNING
THE BASICS OF:

FACILITIES &
EQUIPMENT

BASIC
HANDLING



YOU WILL ALSO HAVE A CHANCE TO WIN PRIZES AND TRY GOAT MEAT AND CHEESE!

KANSAS STATE UNIVERSITY Extension Sumner County 4-H County Extension Councils, Extension Districts, and U.S. Department of Agriculture Cooperative Extension Service are equal opportunity providers and employer. K-State Research & Extension is committed to making its services, activities and programs accessible to all participants. If you have special requirements for a program, contact your local Extension office. Sumner County Extension at 316-385-1917 or sucoext@ksu.edu

Kansas 4-H Day with K-State Women's Basketball



K-State Wildcats Vs.
Iowa State
WILL BE TELEVIEWED



Step 1: Pick a Package:

\$28 Package Includes:

- Ticket
- \$10 Concession Voucher
- T-Shirt

\$18 Package Includes:

- Ticket
- \$10 Concession Voucher

Step 2: Register to get Tickets:

Use the QR Code or the link to register



<https://tinyurl.com/5x84fp33>

Pick up ticket packages on
game day 10:00 am - 12:30 pm
Location TBA closer to event.

Doors open for the general
public at 12:00 pm

Tip-off at 1:00 pm

K-State Research and Extension is an equal opportunity provider and employer. Issued in furtherance of Cooperative Extension Work, Acts of May 8 and June 30, 1914, in cooperation with the U.S. Department of Agriculture, Director of K-State Research and Extension, Kansas State University, County Extension Councils, Extension Districts. Resource: <https://www.apsa.org/topics/residence>

Online registration
for this event will
be due February 8,
2026. No paper
registrations will
be accepted.

Sunday, March 1, @ 1:00 PM

Sheep & Goat Workshop

On Saturday February 7th Sumner County 4-H is hosting a Sheep and Goat Basics workshop. It will be at the Raymond Frye Complex from 10:00am - 12:00pm. Participants will be able to learn about animal selection, handling, feed, care, showing, and more. No matter your experience level, this clinic is designed to help. To view the flyer and to RSVP, please see your email regarding this fun learning event. Please RSVP by January 30th and contact the Extension Office with any questions.

Kansas 4-H Day with the Lady Cats

The 2026 4-H Day with K-State Women's Basketball will be held on Sunday March 1st at 1:00pm. This is a great family event where you can see K-State take on Iowa State in a fun rivalry game. There are two ticket packages to choose from for the game. The first package costs \$28 and includes a game ticket, t-shirt, and \$10 concessions voucher. The second package costs \$18 and includes a game ticket and a \$10 concessions voucher. Please RSVP by February 8th by visiting the QR Code or clicking the link in your email. If you have any questions about the game please don't hesitate to contact the Extension Office.

Read 4-H

2026: READ TO
SUCCEED!

Next Meeting:

March 10th, 2026
6:30pm the Raymond
Frye Complex

Topic:

Local author visit and
discussion about the
process of writing and
publishing a book!

Work on Read 4-H
projects, project goals,
and record books.

Objective:

Our primary objective in Read 4-H this year is Reading for Project Enrichment. We want to encourage participants to expand their knowledge about at least one of their other projects through reading. We want to **read to succeed!** We will meet every other month (Nov, Jan, Mar, May, Jul, Sep) and look forward to including guest speakers, special outings/activities, and project development time to our meetings.

Recap of Previous Meeting:

Read 4-H met at the Raymond Frye Complex on Tuesday, January 6th. The plan for our meeting was to learn about the publishing process from two local authors, but unfortunately they both were unable to attend due to illness. We plan to reschedule their visit for the March meeting.

We spent our meeting talking about our interests and the 4-H projects we plan to be a part of this year. We worked together to think of some ways to use reading to support our project goals. We spent some time folding copy paper into different kinds of books and coming up with fun story ideas for the books we're going to create as our Read 4-H project this year.

Our next meeting will be on March 10th at 6:30pm at the Raymond Frye Complex. In addition to hopefully rescheduling the local authors, we will also spend time working on our Read 4-H projects and updating our project goals for Read 4-H and other 4-H Projects.



Read 4-H



“There is more treasure in books than in all the pirate’s loot on Treasure Island.”

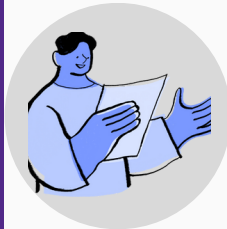
-Walt Disney



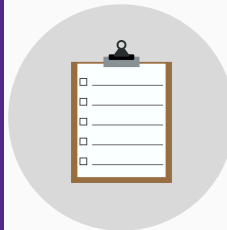
Program Goals



Create a book: Over the course of the year, participants will write a story, draw illustrations, and create a physical book that can be entered into the 4-H Fair in July. Individual goals and a timeline of events will be discussed at the January meeting.



Participate in 4-H Club Days: Whether it’s a reading or a project talk about something reading-related, please plan to enter into the 2026 Sumner County 4-H Club Days in February. We will talk about this at the January meeting.



Complete a Record Book: We will take some time at every meeting to work on Record Books related to your Read 4-H project and related project(s) with an ultimate goal of submitting them once completed in September.



Setting 4-H Project Goals
Participants received and started to fill out their “Setting 4-H Project Goals” worksheet. Get your copy by scanning the code.

Kansas 4-H Project Selection Guide
While projects can vary depending on your local program and availability, this guide offers a starting point for each of the official Kansas 4-H projects.



Agent Notes



Take Advantage of Learning Opportunities

As you've seen on email, Facebook, and this newsletter, there are lots of learning opportunities coming up this spring. Any and all of them are worthwhile, so that begs the question, "which one(s) do I participate in"? The three keys to planning what learning activities to attend are, 1) Does it peak my interest, 2) Does it align with my project goals, 3) Does it fit into my schedule.

Does the learning opportunity peak your interest? You need to be excited about the learning opportunity you are looking to take part in. This may sound simplistic but it is a key to having a successful day of learning. If you aren't excited, you won't learn.

Does the learning opportunity align with my project goals? Well, first you need project goals. For example in a livestock project you might want to learn how to breed, improve feed quality, and learn showmanship skills. Now with project goals in mind you can determine if the learning opportunity will help you accomplish your stated goals.

Does it fit into my schedule. This is the hardest part of deciding what things to participate in. No one can do everything so it comes down to what do you, the participant, want to do. If you are excited, if the event aligns with your project goals, then you should choose to participate even if it mean missing out on something else. This is the basic process of decision making and it should be the process we use to help us decide on what to involve ourselves with. My challenge to you is to try this process and choose one of the many events coming up and attend. If you do so, let me know! I want to hear how it went and what you learned.

Try To Keep Up!

MAKE SURE TO CHECK OUR
FACEBOOK PAGE,
WEBSITE, AND YOUR
EMAIL, TO KEEP UP TO
DATE WITH SUCO 4-H

Side Notes

This topic is something I'm glad my parents taught me how to do, to some extent. In 4-H, it's easy to tell 4-Her's that they are going to a learning event because you said so, but if you can talk with them, stir their interest, and show them how it will help, you would be amazed at how motivated 4-Her's can be to learn. So make sure to set your goals and keep up to date with the events that are going on to find one that your 4-Her is interested in attending.

Club News



Reporter's Corner

Club News from
Sumner County



Happy Hustlers

Happy Hustlers held our regular January meeting which included a rabbit project talk and a “get to know you game” for all ages.

Submitted by Lyla Wiest



Buccaneers

Buccaneers and their Christmas party for their December meeting. We made cards for the residents of the senior apartments, and had activities that included decorating gingerbread houses, ornament making, and decorations.

Trailblazers

Held their regular January meeting.

Redwings

Cardinals



**HAPPY
VALENTINE'S
DAY** ♥

4-H Council Project Night

FEBRUARY 23RD
@ 7:00 PM



4-H Tips

EXPLORE NEW OPPORTUNITIES

THERE IS SO MUCH TO DO IN 4-H IT'S OVERWHELMING. BUT IF WE DON'T TRY NEW THINGS WE DON'T GROW. SO HOW DO WE TRY NEW THINGS?

THE ANSWER IS SIMPLIER THAN YOU'D THINK, SHOW UP. WHETHER OR NOT YOU PARTICIPATE, JUST SHOW UP.

THE ONLY WAY TO LEARN NEW THINGS AND TO GROW IS TO GET EXPOSURE TO THEM. YOU DON'T HAVE TO COMMIT TO EVERYTHING, OR DO EVERYTHING. BUT EXPLORING YOUR OPTIONS IS A GOOD PLACE TO START.

A GREAT OPPORTUNITY TO JUST SHOW UP AND LEARN IS BY COMING TO 4-H CLUB DAYS IN FEBRUARY.

IF YOU ARE NERVOUS ABOUT PUBLIC SPEAKING OR DON'T HAVE A CLUE HOW TO, JUST COME AND WATCH. YOU WOULD BE SURPRISED AT THE COOL PRESENTATIONS YOU CAN SEE AND HOW EASY IT IS TO GIVE ONE.

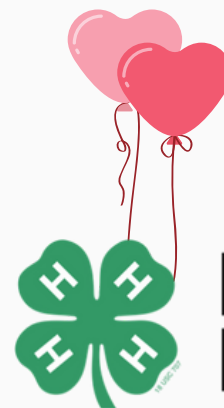
Looking Ahead

February

- 4th; Shooting Sports Meeting @ 6:00pm @ RFC
- 7th; Sheep & Goat Basics Workshop
- 9th; 4-H Club Day Entries Due by 5:00pm
- 16th; Office Closed for President's Day
- 18th; Shooting Sports Meeting @ 6:00pm @ RFC
- 20th; Club Enrollment Fees Due by 5:00pm
- 21st; 4-H Club Days
- 23rd; 4-H Council Project Night

March

- 4th; Shooting Sports Meeting @ 6:00pm @ RFC
- 6th; Regional Club Day Entries Due
- 10th; Read 4-H @ 6:30pm @ RFC
- 18th; Shooting Sports Meeting @ 6:00pm @ RFC
- 20th; Babysitting Clinic
- 21st; Regional Club Day @ Medicine Lodge
- 23rd; 4-H Council & Workgroup



**Beyond
Ready**

KANSAS STATE UNIVERSITY

Extension Sumner County

Connect with us on



Kansas State University Agricultural Experiment Station and Cooperative Extension Service

Kansas State Research and Extension is an equal opportunity provider and employer.

Accommodations:

K-State Research and Extension is committed to providing equal opportunity for participation in all programs, services and activities. Program information may be available in languages other than English. Reasonable accommodations for persons with disabilities, including alternative means for communication (e.g., Braille, large print, audio tape, and American Sign Language) may be requested by contacting the event contact K-State Research & Extension - Sumner County two weeks prior to the start of the event at 620-326-7477 or sucoext@gmail.com. Requests received after this date will be honored when it is feasible to do so. Language access services, such as interpretation or translation of vital information will be provided free of charge to limited English proficient individuals upon request.

Sumner County Office

320 N. Jefferson Ave
Wellington, KS 67152

620-326-7477